

The Insurance Consultant/Peer Review Certification Course with Dr. Charles Copeland

Logan University's College of Chiropractic Postgraduate Department is proud to present this brand new edition of its renowned 100-Hour Insurance Consultant/Peer Review Certification Course. This course is designed for the Doctor of Chiropractic who desires certification as an Insurance Consultant/Peer Reviewer or for those Doctors of Chiropractic, who simply want this important information to help them stay compliant, avoid red flags, and get paid for the valuable services that they provide to their patients. Although the course is designed as a 100-hour certification program, each 12.5-hour session may be taken as a stand-alone seminar. Logan's 100-Hour Insurance Consultant/Peer Review Certification Course has always been an outstanding program, but now with Dr. Charles Copeland as the principal instructor we think it is even better. If you want to be a Certified Insurance Consultant/Peer Reviewer or if you simply want to stay up with current regulations and level the playing field this is the course for you!

1. July 12-13, 2014 ... Introduction

- Ethics of a Review
- Rules of Documentation
- Importance of Documentation
- Coding
- What a Reviewer Looks For
- Outcome Assessments
- Complicating Factors
- Medical Decision Making
- ICD-10 Basic Rules of Coding
- Treatment Plan Elements
- SOAP Notes
- MMI

2. August 9-10, 2014 ... ICD-10

- ICD-10 Purpose
- ICD-9 vs. ICD-10
- Drill-down on Selecting Codes
- Reading the Instructions
- Documentation to Support the ICD-10 Codes

3. September 6-7, 2014 ... Medicare & CCGPP

- Medicare and the OIG
- Medical Necessity
- PQRS
- Active vs. Maintenance Care
- The ABN
- History of CCGPP

4. October 4-5, 2014... Croft Guidelines & Colossus

- The Importance of the Doctor in the PI Case
- Examination of the PI Patent
- Radiology
- Treatment Plan
- Stages of Healing
- Passive Modalities
- Croft Guidelines
- Colossus

5. November 1-2, 2014...ODG, CGP, and IME

- Chart Review
- Writing the Review
- Utilization of ODG
- Codes for Automatic Approval
- Independent Medical Evaluation
- AMA Guides to Permanent Impairment, Overview
- BCBS Guidelines
- Aetna Guidelines
- CGP Guidelines

6. December 6-7, 2014 ... HIPAA, EHR, and OIG

- HIPAA 1996
- Privacy Rule
- Treatment, Payment and Healthcare Operations
- EHR Stage 1
- EHR Stage 2
- Documentation Problems Associated with EHR
- OIG Work Plan for 2015

7. January 10-11, 2015 ... Compliance Rules, Anti-kickback and Stark Laws

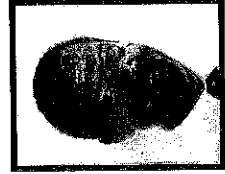
- OIG and Medicare Audits
- Patient Affordable Care Act
- Laws Regarding Medicare Overpayments
- Anti-kickback Regulations
- Stark I and II, Self Referrals
- Stark III

8. February 7-8, 2015 ... Review

- Fraud vs. Abuse
- E and M Guidelines 1995 and 1997
- ODG Guidelines
- Mercy Guidelines
- CCGPP Guidelines
- Medicare Guidelines
- Certification Examination



Tuition: \$245 Regular Registration \$220 Early Bird Discount
(Tuition must be received 15 days prior to session to qualify for Early Bird discounts)



Charles E. Copeland, D.C. is a 1995 graduate of Life University in Marietta, Georgia. He is a Certified Insurance Consultant/Peer Review doctor, is a Medical Compliance Specialist-Physician (MCS-P), and holds CCGPP certification to teach Council on Chiropractic Guidelines Practice Parameters guidelines. Dr. Copeland has received numerous awards within the chiropractic profession including Doctor of the Year from the Kentucky Chiropractic Society in 2010. He maintains a busy private practice of chiropractic in Kentucky.